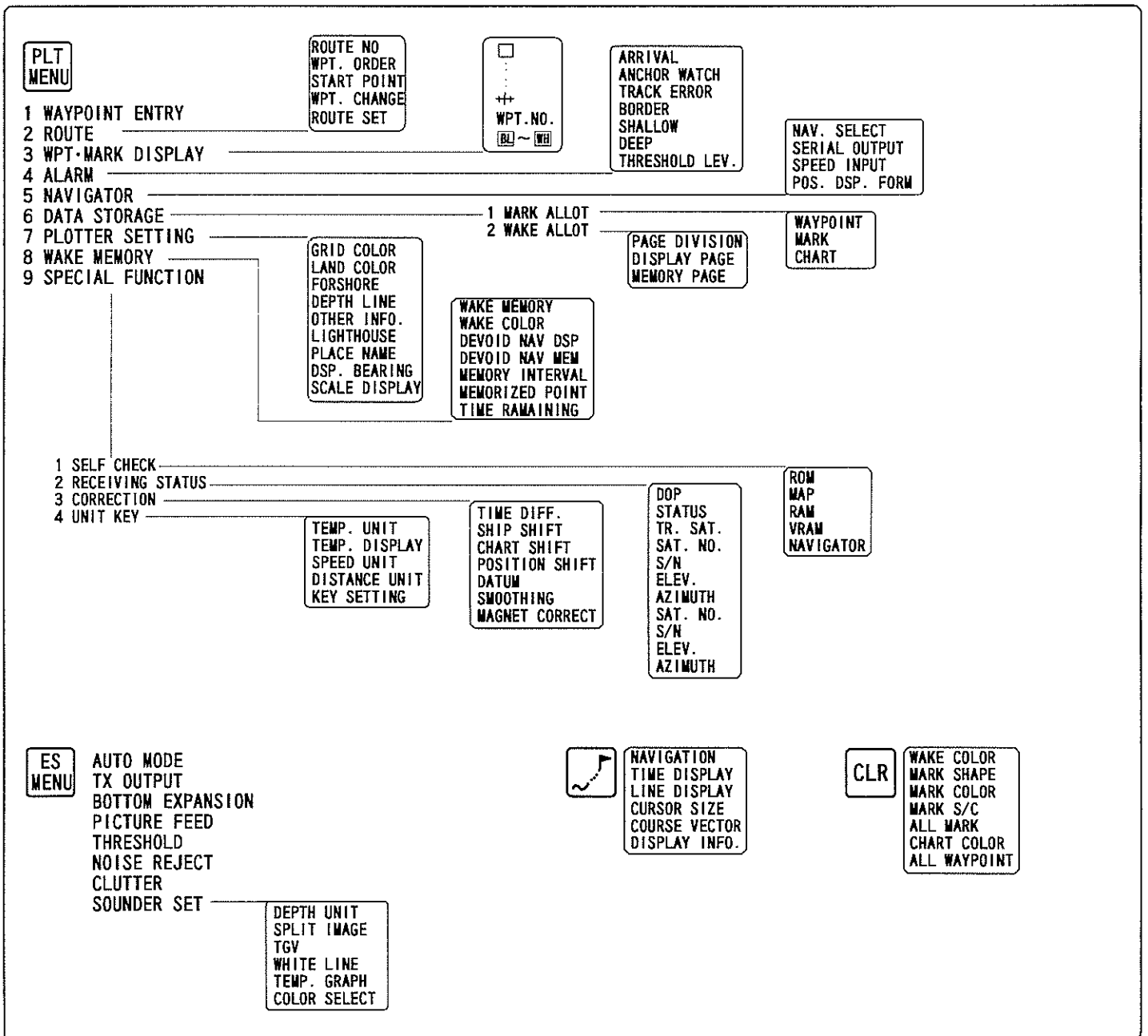




Navigation Sounder

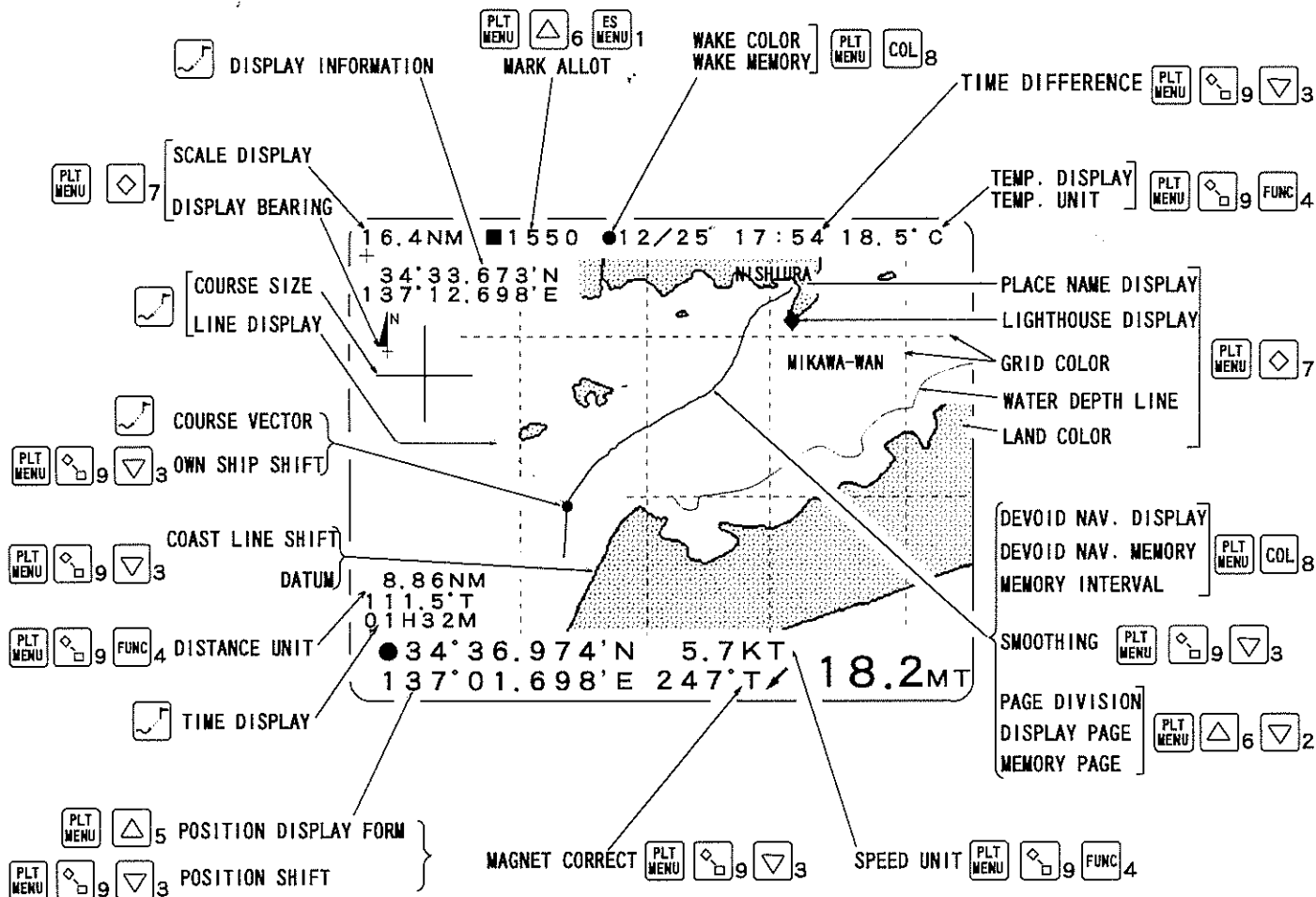
ES-633

DISPLAYED MENU

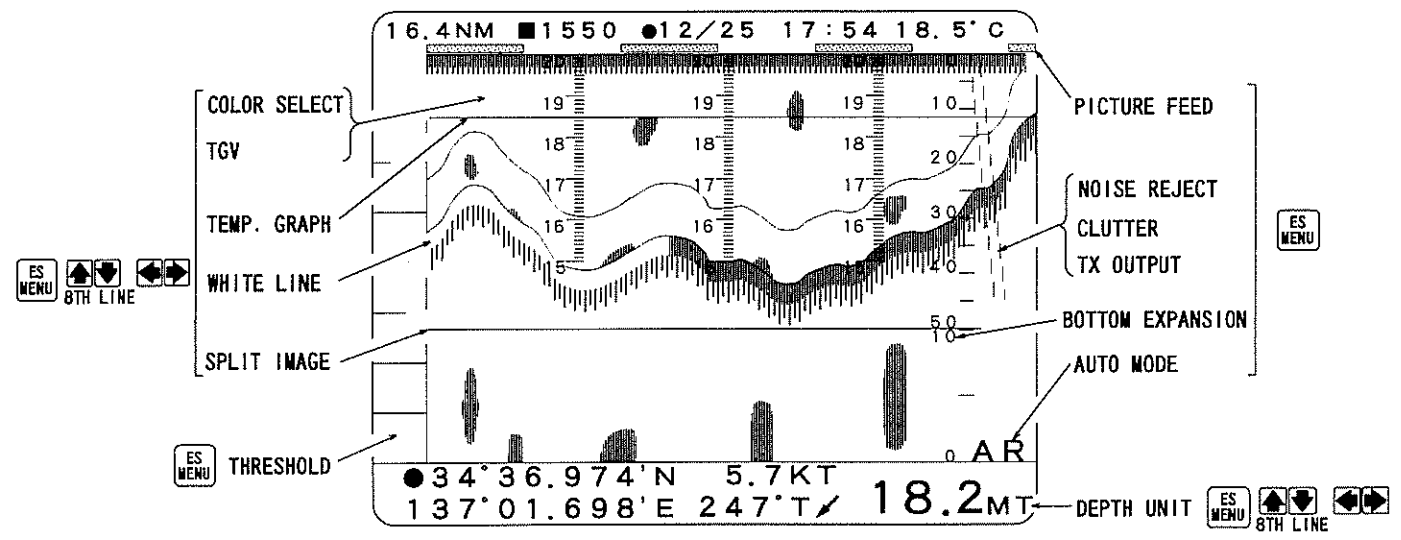


FUNCTION'S SETTING

PLOTTER MODE



SOUNDER MODE



BASIC OPERATION

KEY	DESCRIPTION	KEY	DESCRIPTION
	To enlarge/reduce the display/ring cursor. To center the own ship/cross cursor.		To change the modes. Plotter mode/ Navigation mode/Echo Sounder mode/ Plotter/Sounder mode.
	To shift the display/cursor to up/down/ left/right.		To display the menu for Plotter.
	To shift the yellow indicator in the menu mode.		To display the menu for Echo Sounder.
	To display/erase the cursor.		

FUNCTION KEY

FUNCTION	OPERATING METHOD		
	To reverse the selection order for shape.		To change the range for Bottom expansion mode.
	To reverse the selection order for color.		To set the phased range rate to "0".
	To reverse the key setting		THRESHOLD
	To memorize the wake.		To change the width for Echo Sounder mode on Plotter/Sounder mode.
			1 / 4
			5
			2
			or

ECHO SOUNDER OPERATION

FUNCTION	OPERATING METHOD		
RANGE	To change the range.	1 4 RANGE	
PHASED RANGE	To change the phased range (upper limit).	2 5 PHASED.R	
ALARM	SHALLOW ALARM	+ 4 + 5TH LINE + "ON"	ALARM CANCELLATION
	DEEP ALARM	+ 4 + 6TH LINE + "ON"	+ 4 + 5~7TH LINE + "ON"
	ZONE ALARM	+ 4 + 7TH LINE + "ON"	

PLOTTER OPERATION

FUNCTION	OPERATION METHOD		
<p>WAKE</p>	<p>WAKE COLOR CHANGE</p> 		<p>ERASING WAKE(S)</p> <p>NOT DISPLAYING</p>  
<p>MARK</p>	<p>ENTERING AT CURSOR CROSSING</p>  <p>ENTERING AT OWN SHIP'S POSITION</p>  <p>MARK COLOR CHANGE</p>  <p>MARK SHAPE CHANGE</p>  <p>ONE MARK ERASING</p> 	<p>Shift the cursor crossing.</p> <p>Shift the cursor to the mark to be erased.</p>	<p>ERASING BY SPECIFYING SHAPE</p>  <p>ERASING BY SPECIFYING COLOR</p>  <p>ERASING BY SPECIFYING SHAPE AND COLOR</p>  <p>ERASING ALL MARKS</p>  <p>NOT DISPLAYING</p> 
<p>CHART MARK</p>	<p>ENTERING AT CURSOR CROSSING</p>  <p>Cursor shifting</p>  <p>Cursor shifting</p> 	<p>(To change the mark's shape to ) +  + </p>	<p>PARTIAL ERASING</p>  <p>ERASING BY SPECIFYING COLOR</p> 
<p>WAYPOINT MARK</p>	<p>ENTERING WITH LAT/LON OR LORAN C DATA</p>  <p>PLT MENU + ES MENU 1</p>  <p>"LAT/LON" or "LORAN C"</p>	<p>Shift the cursor to "WAYPOINT ENTRY"</p>	<p>EDITING(LIST)</p>  <p>ENTERING WITH KEY</p> 
<p>COURSE</p>	<p>DISPLAYING TO THE WAYPOINT</p>  <p>1st line "WPT"</p> <p>DISPLAYING TO THE CURSOR POSITION</p>  <p>1st line "CURSOR POS."</p>		<p>DISPLAYING BETWEEN TWO WAYPOINTS</p>  <p>1st line "WPT-WPT"</p> <p>NOT DISPLAYING</p>  <p>1st line "OFF"</p>
<p>ALARM</p>	<p>ARRIVAL ALARM</p>  <p>PLT MENU + FUNC 4 1st line "ON"</p> <p>ANCHOR WATCH ALARM</p>  <p>PLT MENU + FUNC 4 2nd line "ON"</p> <p>TRACK ERROR ALARM</p>  <p>PLT MENU + FUNC 4 3rd line "ON"</p>		<p>BORDER ALARM</p>  <p>PLT MENU + FUNC 4 4th line "ON"</p> <p>ALARM CANCELLING</p>  <p>PLT MENU + FUNC 4 1st~4th line "OFF"</p>
<p>ROUTE SETTING</p>	<p>ROUTE SETTING</p>  <p>PLT MENU + 2 + 5th line</p> <p>ROUTE SELECTION</p>  <p>PLT MENU + 2 + 1st~4th line</p>		<p>ROUTE DISPLAY</p>  <p>1st line "ROUTE NAV."</p> <p>NOT DISPLAYING</p>  <p>1st line "OFF"</p>
<p>MODES</p>	<p>NAVIGATION MODE</p> 		<p>SELF CHECK</p>  <p>PLT MENU + 9 + ES MENU 1</p> <p>RECEIVING STATUS</p>  <p>PLT MENU + 9 + 2</p>
<p>USER SETTING</p>	<p>USER SETTING</p>  <p>OFF → ON </p> <p>Press together.</p>		<p>USER SETTING WHICH MEMORIZES DATA</p>  <p>OFF → ON </p> <p>Press together.</p> <p>USER SETTING WHICH ERASES DATA</p>  <p>OFF → ON CLR </p> <p>Press together.</p>