



Dear **[[customer.name]]**,

Welcome to the November newsletter from SKIPPER Electronics AS.

**SKIPPER ESN200 new Echo Sounder!**

The SKIPPER ESN200 is a dual channel Echo Sounder. ESN200 is delivered with a 9" touch display and is connected to the electronic unit with LAN. The ESN200 is designed for INS and IBS solutions.

Auto mode is available for all settings.

All existing SKIPPER transducers will fit in addition to the new dual transducer 50/200 kHz.

The SKIPPER ESN200 has already been approved with MED-B, so the system has full Wheelmark with correct transducers.

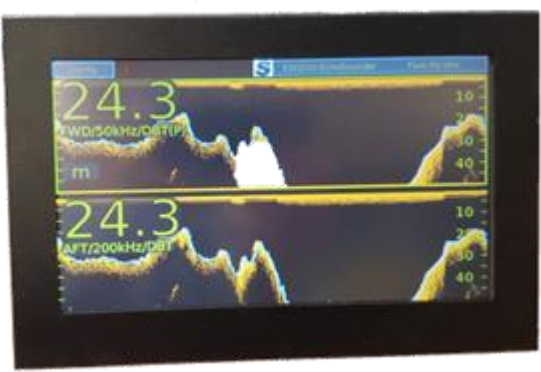
Both channels will operate with the following frequencies, but one of the below Wheelmarked transducer need to be connected for the full system to be Wheelmarked:

- **50/200 kHz (Wheelmarked)**
- 24 kHz (Not Wheelmarked)
- 30 kHz (Not Wheelmarked)
- 33 kHz (Not Wheelmarked)
- **38 kHz (Wheelmarked)**
- **50 kHz (Wheelmarked)**
- 100 kHz (Not Wheelmarked)
- **200 kHz (Wheelmarked)**
- 210 kHz (Not Wheelmarked)

The system will be ready for delivery in Q1 2019. Bottom housing and transducers are available today.

Please send your RFQ to [sales@skipper.no](mailto:sales@skipper.no).

[For more information please click here!](#)



## Indication of training Courses in 2019

The following training courses are on planning for 2019:

Date	Place	Host Comany	Duration (Days)
Spring	USA	TBA	4
Summer	Europe	TBA	4
Autumn	China	TBA	4

### **SKIPPER** Company Evaluation

SKIPPER would like your feedback regarding our products and service. The evaluation will take 2 minutes.  
Please enter the evaluation here: [Company Evaluation](#)

**Best regards,**

**Sigurd H. Paulsen**  
Managing Director  
**SKIPPER Electronics AS**  
Phone: +4723302270  
[sales@skipper.no](mailto:sales@skipper.no)  
<http://www.skipper.no>

[Unsubscribe](#)