

Welcome to the January edition of SKIPPER Newsletter.

## Sales

### Follow SKIPPER on Facebook:

Join SKIPPER on Facebook with this link: <http://www.facebook.com/groups/374685331159/>

### Release of the Echo Sounder, Transducer and NMEA tester ETT985:

SKIPPER is now releasing the new support tool for all technicians serving acoustic products. The SKIPPER ETT985 is a combined Echo Sounder simulator, Transducer tester and NMEA tester, in a single handheld unit. This tool allows the technician to test both the acoustical functions of the Echo Sounder and Transducers. The ETT985 has a built-in rechargeable battery.

#### Simulator:

The simulator will measure the transmitted pulse and replying with either the same pulse or a user defined pulse. In conjunction with the systems data bulletin an integrity test of the Echo Sounder unit can be performed in minutes.

#### Transducer tester:

This is a tester that measures the characteristics of the transducer, showing the resonance and electrical characteristics of the transducer. Using pre-programmed limits, the user can select a pre-programmed transducer and check with the factory values. A simple pass/fail is given. The tester works for any transducer (directly to transducer, not through circuitry).

#### NMEA tester:

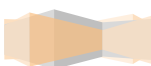
The NMEA tester can monitor NMEA lines, loop back signals from devices and send standard formats for GPS, Gyro, Echo Sounders, Speed Logs etc.

It can also be used as a NMEA RS232 converter or directly to USB with included converter.

#### Software:

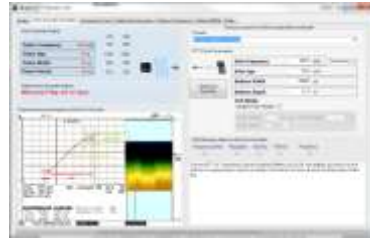


A new SKIPPER service software is also now available at no cost, giving tools for diagnostics for EML224 sensor, and the ETT985, as well as providing a terminal emulator.

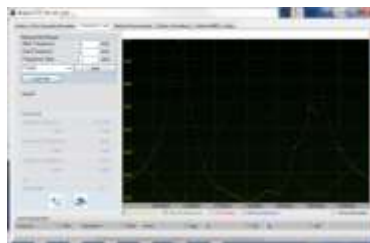


With the optional software activated, the software changes the tester to a lab tool by increasing the functionality of the tester.

Using a serial port, the tester can be connected to the PC based software enabling the user to access extra parameters of the system.



The simulator can directly be controlled and be made to also generate fish signals for fish-finder Echo Sounders. It also allows a serial input function to change the depth and settings of the unit (ideal for bridge simulators).



The transducer tester becomes a full (un-calibrated) impedance analyser showing the full plot of frequency vs. impedance, susceptance, conductance, and phase as well as detecting the resonance, anti-resonance and calculating the bandwidth of the Transducer. In addition the limits of any Transducer can be programmed such that the pass/fail integrity test of any compatible Transducer can be checked with the tester alone in the field.

The NMEA tester can be programmed with your own formats and saved in the tester for later use.

ETT985-SA: Tester without pc software functionality

ETT985-SASW: Tester with pc software functionality

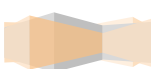
[For more information regarding the ETT985 please enter our web site here!](#)

## Company evaluation

SKIPPER would like your feedback regarding our products and service. The evaluation will take 2 minutes. [Please access the evaluation here!](#)

## Technical

## Training Schedule:



Send your registration to [support@skipper.no](mailto:support@skipper.no).

Preliminary plan of service trainings 2013:

Date	duration (days)	Course type	Country	Town	Availability
February	3	Service	U.E.A.	Dubai	No
June	3	Service	Spain		Yes
July	3	Service	North America		Yes
September	3	Service	Norway		Yes
October	3	Service	Singapore	Singapore	Yes

Best regards,

**SKIPPER**  
SKIPPER Electronics AS  
www.skipper.no

**Sigurd H. Paulsen**

Sales/marketing manager

**SKIPPER Electronics AS**

