

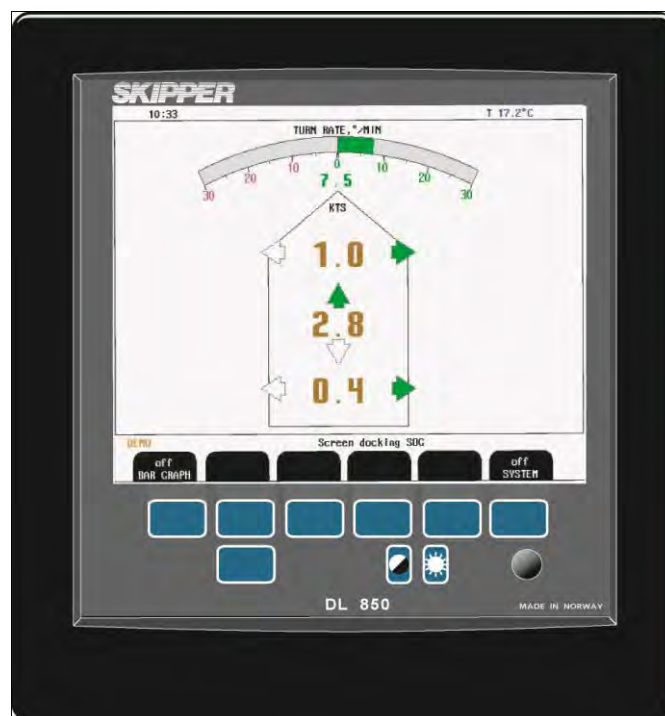
Welcome to the December edition of SKIPPER Newsletter.

The year 2010 is now about to end, so this will be the last newsletter from SKIPPER this year. We really appreciate all your effort throughout 2010, and hope our relationship will continue into the new year of 2011.

Sales

DL850 with Docking mode (Three axis):

Please be informed of the Docking mode of the DL850. This is available on both 540 and 270 kHz versions. In addition to forward/aft speed and transversal speed at the bow, the Docking mode will show the transversal speed at stern of the vessel, when connected to the Gyro. It will not only show the speed through water in three axis with Docking mode, but will also show the speed over ground in all three axis!



[Read more here!](#)

New Pricelist for 2011:

The new Retail Pricelist will be available to download from www.skipper.no 3. January 2011.

Please note that we have not made any severe changes to the new pricelist concerning prices.

Technical/Service news

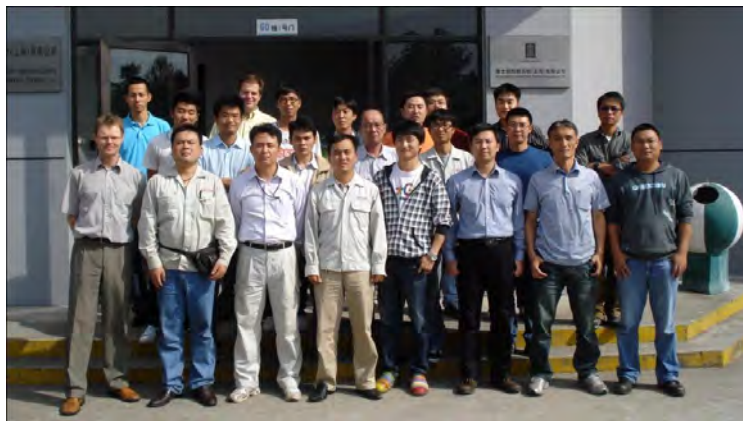
Schedule for SKIPPER Electronics service trainings 2011

Course 2011							
Date	duration	Open for	Course type	Continent	Country	Town	Sponsor company
9th.-11th. February	2,5 days	Service dealers/HUBs	Advanced service	Middle East	UAE	Dubai	Elcome
22nd.-24th. March	2,5 days	Service dealers/HUBs	Advanced service	Europe	Spain	Algeciras	Aage Hempel
1st.-3rd. June	2,5 days	Service dealers/HUBs	Advanced service	N.America	USA	Ft. Lauderdale	L-3 G.A.International
August		Service dealers/HUBs	Advanced service	Europe	Norway	Oslo	SKIPPER Electronics AS
August		HUBs	Hub tech	Europe	Norway	Oslo	SKIPPER Electronics AS
October		Service dealers/HUBs	Advanced service	Asia	Singapore	Singapore	To be decided

Registration to support@skipper.no

A training in China/Korea area will be considered autumn 2011 / Spring 2012 if big requests.

Picture from SKIPPER service training in Shanghai September 2010 at Kongsberg Maritime premises.



Seven Seas Marine service Co. Ltd. In Shanghai, China now has 7 trained engineers and a full set of spares for SKIPPER Electronics equipment.



More info about HUBs:

<http://www.skipper.no/hubs.html>

Did you know you can find what parts are available at the HUBs?

<http://www.skipper.no/hubs/127-hubs-partlist.html>

Best regards



Sigurd H. Paulsen

Sales/marketing manager

SKIPPER Electronics AS

Sales

DL850 Speed Log with docking mode:

The SKIPPER DL 850 is a dual axis speed log, working on the Doppler principle, providing longitudinal and fore/aft transversal ship speed relative to the sea bed or the water. The DL 850 provides accurate navigation parameters measured as they happen, and presented in a logical, user friendly way.



Features:

Speed over ground (in 2 or 3 axis)

Speed through water (in 2 or 3 axis)

Depth and water temperature

Interfaces - NMEA 0183, Pulse and Analogue outputs

Display - LCD 10.4" with full night dimming, day/night presets

Easy to use navigation display - integrated menus and softkeys

On screen diagnostics

Logging functions

Mounting options - Tank, Sea Valve for single or double bottom hull designs

Please feel free to download the brochure on www.skipper.no.

Docking function

How does it works:

1. The transversal bottom speed is measured from the Doppler sensor
2. The Rotation signal is combined with this (NMEA 0183)
3. The length of the vessel is known
4. The speed aft is calculated

